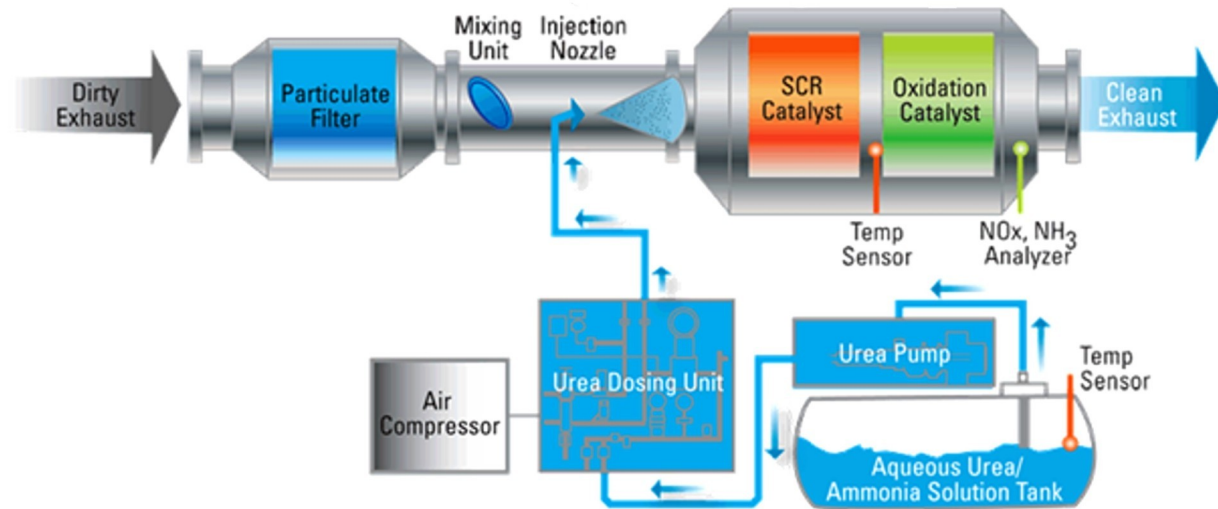
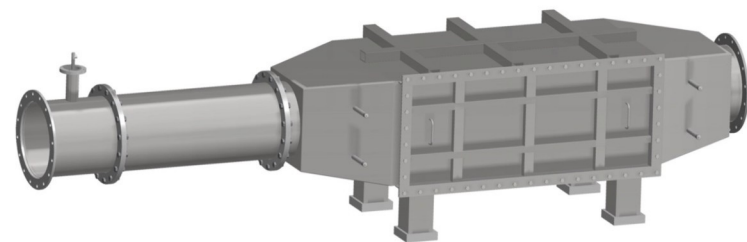


What does a Blue-Cat[®] after treatment system look like?



Technical specifications*

| Model | | IWW | | |
|---|--------------------|--------------|--------------|--------------|
| | | Blue-Cat 350 | Blue-Cat 400 | Blue-Cat 450 |
| Power range | kW | 400 – 800 | 800 – 1100 | 1100 – 1400 |
| Exhaust flow range | Nm ³ /s | 3200 – 4100 | 4100 – 5500 | 5500 – 7000 |
| Volume catalyst | m ³ | 0,284 | 0,432 | 0,729 |
| NOx before | g/kW.hr | | 13 | |
| NOx after | g/kW.hr | | 2 | |
| Dimensions reactor/silencer including 50mm insulation and (alu) cladding | | | | |
| Total (build in) length | mm | 3250 | 3750 | 3750 |
| Width | mm | 900 | 900 | 1100 |
| Height | mm | 700 | 900 | 900 |
| NB inlet / outlet | mm | 350 | 400 | 450 |
| Dimensions injection section excluding isolation | | | | |
| Total (build in) length | mm | 1500 | 1500 | 1500 |
| NB inlet / outlet | mm | 350 | 400 | 450 |



* Note: dimensions are indicative
 * Note: Above shown SCR model is indicative

| Blue-Cat 500 | IMO | |
|--------------|--------------|---------------|
| | Blue-Cat 600 | Blue-Cat 700 |
| 1300 – 1900 | 1900 – 3000 | 3000 – 3700 |
| 6000 – 8200 | 8200 – 14000 | 14000 – 18000 |
| 0,608 | 0,972 | 1,152 |
| | 13 | |
| | 2 | |
| 4750 | 5250 | 5750 |
| 1300 | 1500 | 1500 |
| 1100 | 1200 | 1500 |
| 500 | 600 | 700 |
| | | |
| 1750 | 1750 | 1750 |
| 500 | 600 | 700 |

The Discom Maritime Effect



Solutions for noise, emission and heat

Why Emission Control?

Emissions from the global shipping industry amount tot around 1 billions tons a year, accounting for 3% of the world's total greenhouse gas (GHG) emissions and 4% of the EU's total emissions.

Without action, these emissions are expected to more than double by 2050!

This is not compatible with the internationally agreed goal of keeping global warming below 2°C, which requires worldwide emissions to be at least halved from 1990 levels by 2050.

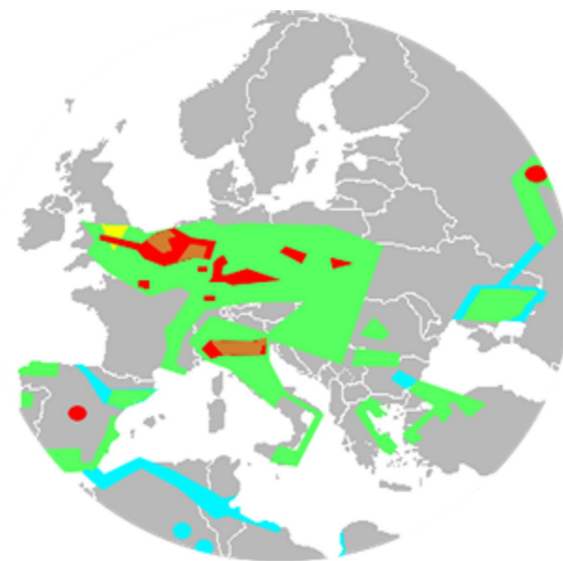
Sea going transportation is expected to meet the the IMO rules.



Inland water transportation is expected to keep up with road transport if they want to keep their position in a sustainable transport chain.

The effects on our society and your business

- Health effects on humans
- Environmental effects
- Port requirements
- Green image (Green Award)
- Public opinion
- Sustainability of your sector
- Avoiding NOx taxes
- Getting free acces to all waters
- Governmental legislation



Most air polluted area's EU, source: ESA

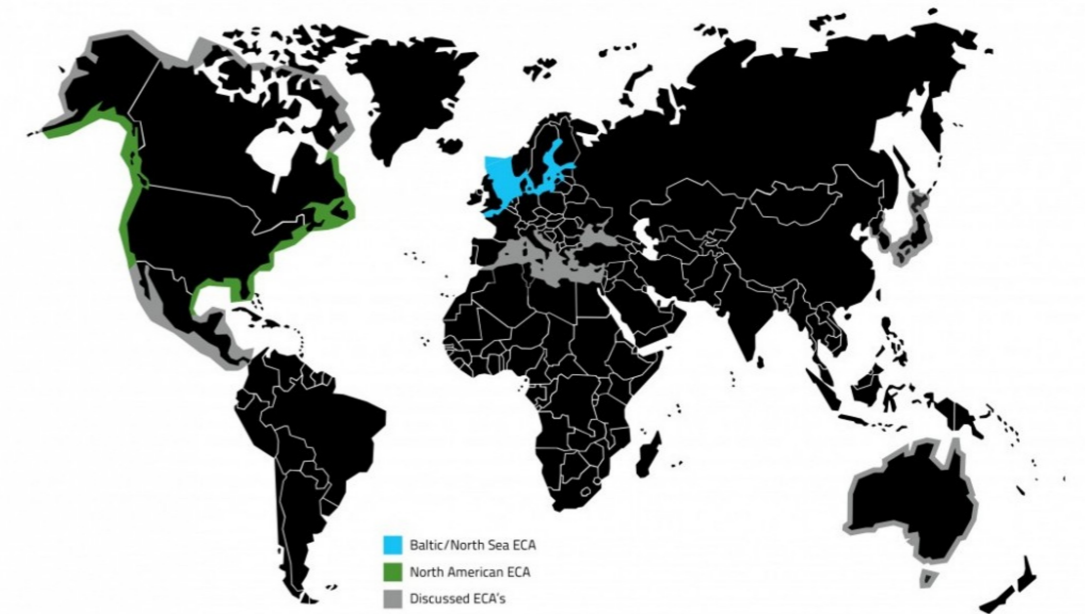
What's coming up?

- IMO Marpol Annex VI TIER III (2016)
- Appointing more emission controlled area's (ECA'S)
- EU rules

***Doing nothing is no longer an option!
We can assist you to make your business more sustainable!***

Contact our employees for more details. By phone at **+31 (0)78 681 09 60** or by email at **info@discom.eu**.

Worldmap for ECA's (Emission Control Areas)



Source: Marpol

Is after treatment the solution? At least it helps!

An exhaust after treatment using Selective Catalic Reduction (SCR) is a reliable and proven solution to reduce emissions.

What does the Blue-Cat® product range of Discom offer you?

- Superior NOx reduction efficiency
- Giving space to fuel savings
- Combined unit for noise *and* emission control
- Compact and low weight design
- Lower operational costs
- Optional PM filter
- Optional dust clean system (*when using HFO*)

Why should you choose Discom as your partner for emission control?

- For over 35 years expert in exhaust technology
- Well known as a reliable partner
- High quality products and support
- Together with our partner H&H Engineering & Service unique expertise
- Over 300 installations in operation
- 24/7 support



Please visit our website for more information about emission control and our other solutions for noise, emission and heat: **www.discom.eu**