

CompaC (-C)



discom

EXHAUST TECHNOLOGY

Solutions for a **better world**

CompaC(-C)

Type CompaC(-C) silencers are specially designed for applications where a reasonable silencer with minimum dimensions is required. This compact silencer is suitable for exhaust systems of 2- and 4-stroke combustion engines with less critical noise requirements and is therefore the space-saver within our standard range.

Functioning

The silencer's action is based on a combination of the reflection and absorption principle and therefore provides good sound reduction over the entire frequency range. The CompaC-C is fitted with an integrated spark arrestor.

Mounting

The spark arrestors can be mounted in any position, taking into account the specified flow direction. When it comes to the CompaC-C, the spark collector must be positioned below the horizontal axis. We can provide the silencers with supports or mounting brackets to facilitate easy installation.

Note!

Exhaust systems of internal combustion engines are subject to pulsations and other forms of vibration. It is therefore always recommended to mount the entire exhaust system vibration-free with the appropriate vibration isolators. Discom carries a complete range of vibration dampers. Need advice? Please contact one of our employees at telephone number +31(0)78 681 0960.

Quality and safety

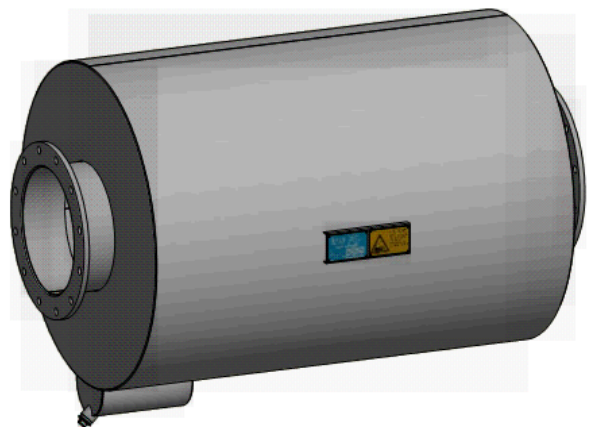
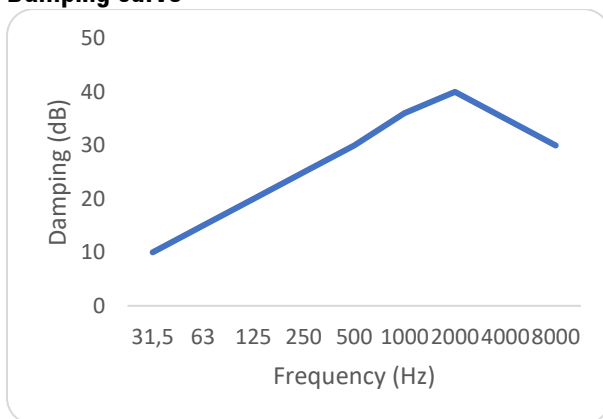
Our working method is ISO 9001-certified, from design to delivery. This means that we deliver products and services that systematically and reliably meet your requirements and comply with the relevant laws and regulations. The silencers are intended for installation, so no CE marking is applicable. As you are obliged to highlight possible dangers such as fire hazard in the description of your end product, we will place a pictogram on the silencer for you.



Technical specifications

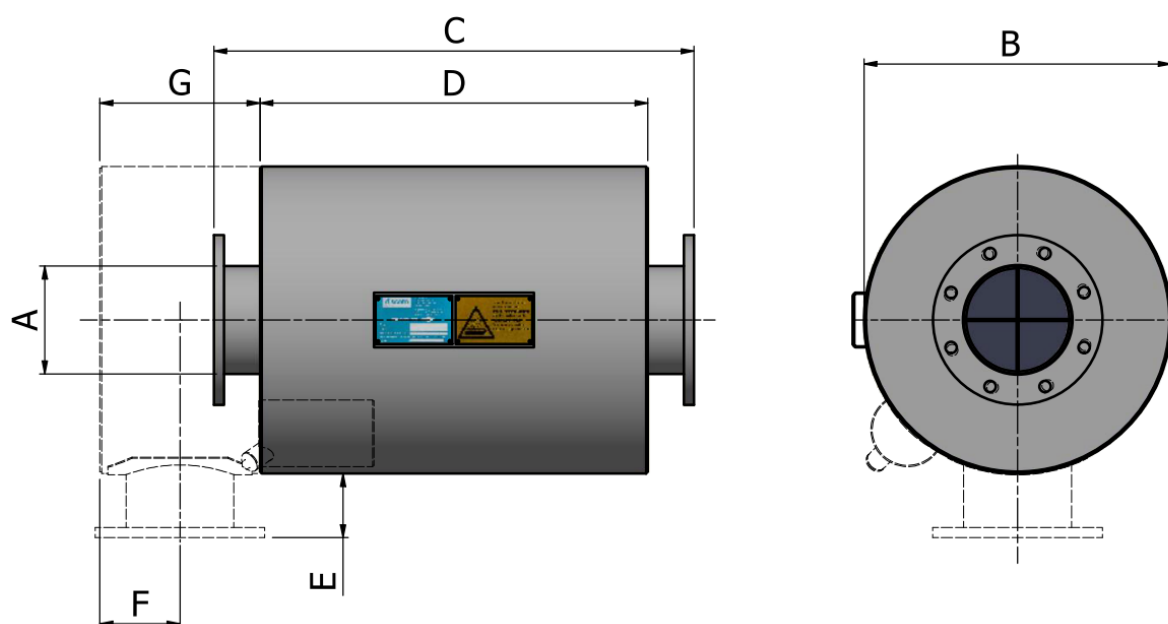
Attenuation	: Approx. 15 - 25 dB(A)
Recommended design gas velocity	: Minimum 20 and maximum 50 m/s.
Pressure drop over the silencer	: See the CW values in the table below.
Maximum permitted gas temperature	: 600°C for S235 JR G2 Please consult us in case of different application temperatures and materials.
Material	: S235 JR G2. Stainless steel, Corten or other materials are optional.
Preservation	: Corrosion-resistant heat-resistant coating (anthracite).
Insulation	: The silencer casing will take on a similar temperature to the medium. In many cases lagging will be necessary. Additional insulation may be needed when noise breakout of the body is a decisive factor for achieving the noise demand. We would be happy to advise you on the options available.
Flanges	Drilled as standard according to EN1092-1 type 01 table 11 (DIN 2573 PN6). Other flange models on request
Identification	: Marking by type plate with silencer type, spark arrestor (if integrated) and serial number.
Maintenance	: Annual inspection of the structure. Spark arrestor (when integrated) every two months.
Options	: Single or double inlet, radially positioned inlet or outlet, mounting brackets.

Damping curve



Dimensions

ND (Nominal penetration)	A(mm) (external pipe diameter)	B (mm)	C (mm)	D (mm)	E (mm)	F (mm)	Weight (kg)	CW	
050	2"	60.3	206	300	215	75	45	8	4.10
065	2 ½"	76.2	306	420	320	75	65	17	3.98
080	3"	88.9	306	420	320	75	65	18	3.84
100	4"	114.3	356	540	390	100	90	27	3.69
125	5"	139.7	401	660	525	100	105	44	3.71
150	6"	168.3	482	750	606	100	125	70	3.38
200	8"	219.1	556	900	756	150	165	96	3.64
250	10"	273.0	708	1000	856	150	205	155	3.52
300	12"	323.9	800	1200	1006	150	245	218	3.79
350	14"	355.6	908	1500	1256	150	265	303	3.45
400	16"	406.4	1060	1600	1408	150	305	433	3.95
450	18"	457.2	1212	1700	1510	150	345	640	4.39
500	20"	508.0	1312	2000	1810	150	380	810	3.79



*With a radially arranged inlet, the length of the silencer changes by $1 \frac{1}{2} \times A$ (diameter).